

Hoisting Equipment Trolleys



HTP (Push trolley)



HTG (Geared trolley)

HTP and HTG Push and geared trolley

Capacity 500 - 50000 kg

The trolley enables the exact positioning or easy traversing of large loads with either manual or powered hoisting equipment.

Features

- It has excellent rolling features due to machined steel wheels mounted on prelubricated, encapsulated ball bearings.
- Adjustable to fit a wide range of beam widths and profiles (e.g. INP, IPE and IPB).
- Adjustments are made by rotating the clevis load bar which also ensures the centred positioning of the hoist in the clevis – no creeping to the left or the right (up to 5000 kg capacity, from 8000 kg upwards the traverse is adjusted via sleeves and washers).
- The trolley wheels are designed for a max. beam profile incline of 14% (DIN 1025 - part 1).

Options

up to 20000 kg capacity:

- Rotating hand chain guide.
- Stainless steel hand chains.
- Locking device to secure the trolley in position on the beam (park position e.g. on ships).
- Corrosion resistant version.

all capacities:

- Buffers

SERIES EXTENSION

NOW WITH HIGH WWL!

30000 - 50000 kg

INFO

Yale hoists and trolleys are not designed for passenger elevation applications and must not be used for this purpose.

Hoisting Equipment Trolleys

Technical data HTP

Model	Art.-No.	Capacity kg	Size	Beam flange width b mm	Beam flange thickness t max. mm	Curve radius min. m	Hand effort at WLL daN	Weight kg	Weight with locking device kg
HTP 500	N05141273	500	A	50 - 220	25	0.9	-	8.0	14.5
HTP 1000	N05141274	1000	A	50 - 220	25	0.9	-	9.0	17.0
HTP 2000	N05141275	2000	A	66 - 220	25	1.15	-	16.0	24.0
HTP 3000	N05141276	3000	A	74 - 220	25	1.4	-	32.0	41.2
HTP 5000	N05141277	5000	A	90 - 220	25	1.8	-	48.0	58.5
HTP 500	N05148305	500	B	160 - 300	40	0.9	-	10.6	17.1
HTP 1000	N05148306	1000	B	160 - 300	40	0.9	-	12.0	20.0
HTP 2000	N05148307	2000	B	160 - 300	40	1.15	-	19.3	27.3
HTP 3000	N05148308	3000	B	160 - 300	40	1.4	-	35.8	45.0
HTP 5000	N05148309	5000	B	180 - 300	40	1.8	-	52.2	62.7

Technical data HTG

Model	Art.-No.	Capacity kg	Size	Beam flange width b mm	Beam flange thickness t max. mm	Curve radius min. m	Hand effort at WLL daN	Weight ¹ kg	Weight ¹ with locking device kg
HTG 500	N05300006	500	A	50 - 220	25	0.9	3	97	16.2
HTG 1000	N05300007	1000	A	50 - 220	25	0.9	6	11.2	19.2
HTG 2000	N05300008	2000	A	66 - 220	25	1.15	7	18.0	26.0
HTG 3000	N05300009	3000	A	74 - 220	25	1.4	7	35.4	44.6
HTG 5000	N05300010	5000	A	90 - 220	25	1.8	9	51.8	62.3
HTG 500	N05300011	500	B	160 - 300	40	0.9	3	12.6	19.1
HTG 1000	N05300012	1000	B	160 - 300	40	0.9	6	14.1	22.1
HTG 2000	N05300013	2000	B	160 - 300	40	1.15	7	21.3	29.3
HTG 3000	N05300014	3000	B	160 - 300	40	1.4	7	39.2	48.4
HTG 5000	N05300015	5000	B	180 - 300	40	1.8	9	56.0	66.5
HTG 8000	N05300016	8000	B	125 - 310	40	1.8	14	104.0	-
HTG 10000	N05300017	10000	B	125 - 310	40	1.8	14	104.0	-
HTG 15000	N05300018	15000	B	125 - 310	40	5.0	29	230.0	-
HTG 20000	N05300019	20000	B	125 - 310	40	5.0	29	230.0	-
HTG 30000	192045613	30000	B	175 - 305	34	1.6	24	248.0	-
HTG 50000	192045614	50000	B	175 - 305	34	5.1	25	489.0	-

¹Weight HTG: without hand chain



We are pleased to send you our new Atex catalogue in PDF format.

Hoisting Equipment Trolleys

Dimensions HTP

Model	HTP 500-A	HTP 1000-A	HTP 2000-A	HTP 3000-A	HTP 5000-A	HTP 500-B	HTP 1000-B	HTP 2000-B	HTP 3000-B	HTP 5000-B
A, mm	77	82.5	98.5	114	132.5	92	97.5	113.5	129	147.5
D, mm	16	17	22	26	33	16	17	22	26	33
D1, mm	25	30	40	48	60	25	30	40	48	60
D2, mm	30	35	47	58	70	30	35	47	58	70
F1, mm	57.5	57.5	57.5	57.5	57.5	57.5	57.5	57.5	57.5	57.5
H1, mm	30.5	30.5	30.5	30	30	45.5	45.5	45.5	45	49.5
I (HTP), mm	71.5	71.5	95.5	131	142.5	71.5	71.5	95.5	131	142.5
L, mm	260	260	310	390	450	260	260	310	390	450
L1, mm	130	130	150	180	209	130	130	150	180	209
O, mm	60	60	80	112	125	60	60	80	112	125
P1, mm	168	168	168	168	168	168	168	168	168	168
P2, mm	146	150	155	160	167.5	177	177	177	180	187.5
L3, mm	346	346	396	476	556	346	346	396	476	556

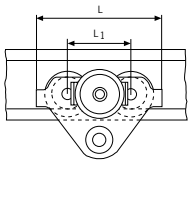
Dimensions HTG

Model	HTG 500-A	HTG 1000-A	HTG 2000-A	HTG 3000-A	HTG 5000-A	HTG 500-B	HTG 1000-B	HTG 2000-B	HTG 3000-B	HTG 5000-B
A, mm	77	82.5	98.5	114	132.5	92	97.5	113.5	129	147.5
D, mm	16	17	22	26	33	16	17	22	26	33
D1, mm	25	30	40	48	60	25	30	40	48	60
D2, mm	30	35	47	58	70	30	35	47	58	70
F (HTG), mm	91.5	91.5	90.5	107.5	149.5	91.5	91.5	90.5	107.5	149.5
F1, mm	57.5	57.5	57.5	57.5	57.5	57.5	57.5	57.5	57.5	57.5
H1, mm	30.5	30.5	30.5	30	30	45.5	45.5	45.5	45	45
I (HTG), mm	76.5	76.5	98	132.5	148.5	76.5	76.5	98	132.5	148.5
L, mm	260	260	310	390	450	260	260	310	390	450
L1, mm	130	130	150	180	209	130	130	150	180	209
O, mm	60	60	80	112	125	60	60	80	112	125
P (HTG), mm	110	110	110	110	110	110	110	110	110	110
P1, mm	168	168	168	168	168	168	168	168	168	168
P2, mm	146	150	155	160	167.5	187	187	189.5	191.5	191.5
L3, mm	346	346	396	476	556	346	346	396	476	556
P3, mm	194	194	194	195	195	194	194	194	195	195

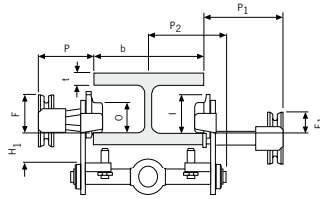
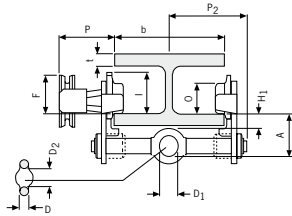
Dimensions HTG

Model	HTG 8000-B	HTG 10000-B	HTG 15000-B	HTG 20000-B	HTG 30000-B	HTG 50000-B
A, mm	276	276	270	270	261	310
B, mm	52	52	70	70	65	100
D, mm	30	30	35	35	35	60
D1, mm	80	80	110	110	90	125
D2, mm	114	114	155	155	125	195
F (HTG), mm	113	113	113	113	93	93
F1, mm	77	77	-	-	-	-
H1, mm	45	45	45	45	40	40
I (HTG), mm	170	170	170	170	224	224
L, mm	430	430	870	870	625	1.260
L1, mm	200	200	200	200	296	296
L2, mm	-	-	115	115	164.5	164.5
O, mm	150	150	150	150	196	196
P (HTG), mm	163	163	163	163	165	165
P1, mm	193	193	-	-	-	-
T, mm	270	270	270	270	333	343
L3, mm	536	536	976	976	-	-

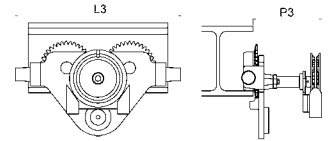
Hoisting Equipment Trolleys



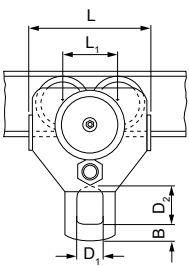
HTP/G, 500 - 5000kg



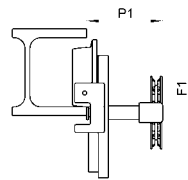
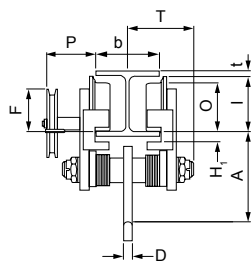
HTP/G, 500 - 5000kg,
with locking device



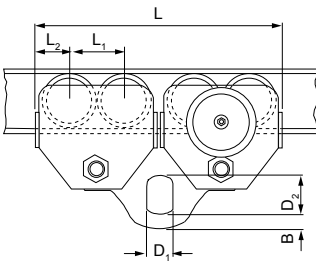
HTG, 500 - 5000kg,
with rotating hand chain guide
and buffers



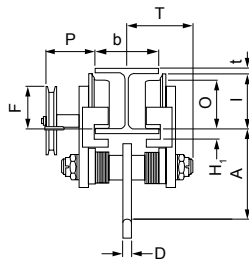
HTG, 10000 kg



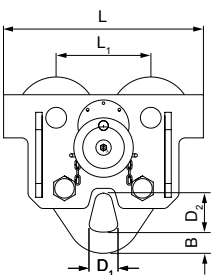
HTG, 10000kg,
with locking device



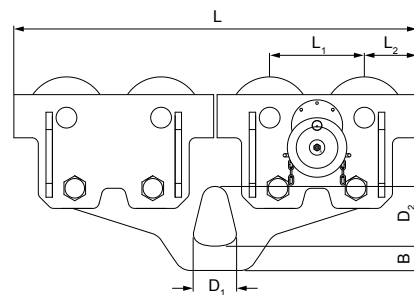
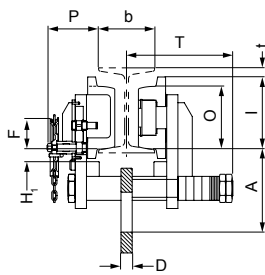
HTG, 15000 - 20000 kg



SERIES EXTENSION
NOW WITH HIGH WWL!
30000 - 50000 kg



HTG, 30000 kg



HTG, 50000 kg

